

30" KINSALE VANITY

PRODUCT SPECIFICATIONS

Height: 38-1/2" - includes 4" backsplash

Depth: 19"

Width: 30"

Solids: Yellow Poplar

Veneers: (WLD) Engineered Oak

Panels: MDF + Plywood

Number of Doors: Two

Number of Drawers: One internal

USB/Power Component: Yes
(ETL5011080)

Cord Length: 6'6"

Installation Type: Floor Standing

Assembly Required: Attach the top with sink to the cabinet

Hardware Features: European Soft-Close Hinges, Full Extension Soft-Close Glides, Adjustable Levers

Hardware Materials: Zinc Alloy

Hardware Finish: Champagne Brass (BW, WLD) and Satin Nickel (SBL)

Sink Top Included: Yes

Sink Top Material: Smooth White Composite

Number of Basins: One

Faucet: 8" Widespread - not included

Basin Overflow: Yes - facing front

Fits Drain Hole Size: 1-3/8"

AVAILABLE FINISHES

 BRIGHT WHITE
MN253V30BW

 CHAMPAGNE
BRASS

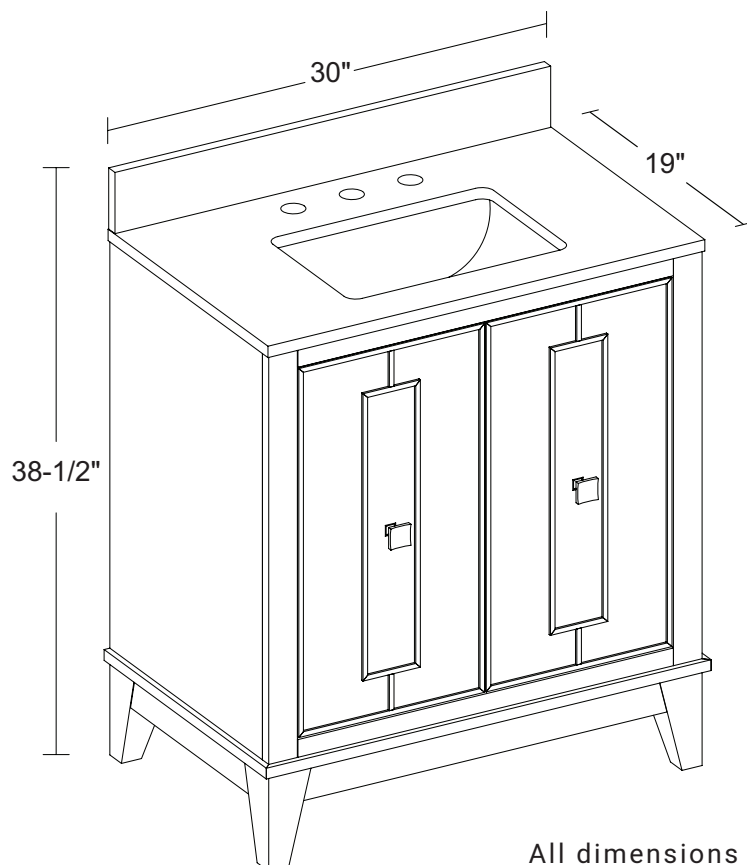
 WALNUT DRIFT
MN253V30WLD

 CHAMPAGNE
BRASS

 SOFT BLUE
MN253V30SBL

 SATIN NICKEL

PRODUCT DIMENSIONS



ASME A112.19.2-2018/CSA B45.1-18

SINK MODEL: F2014B

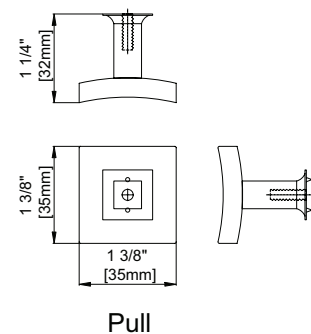
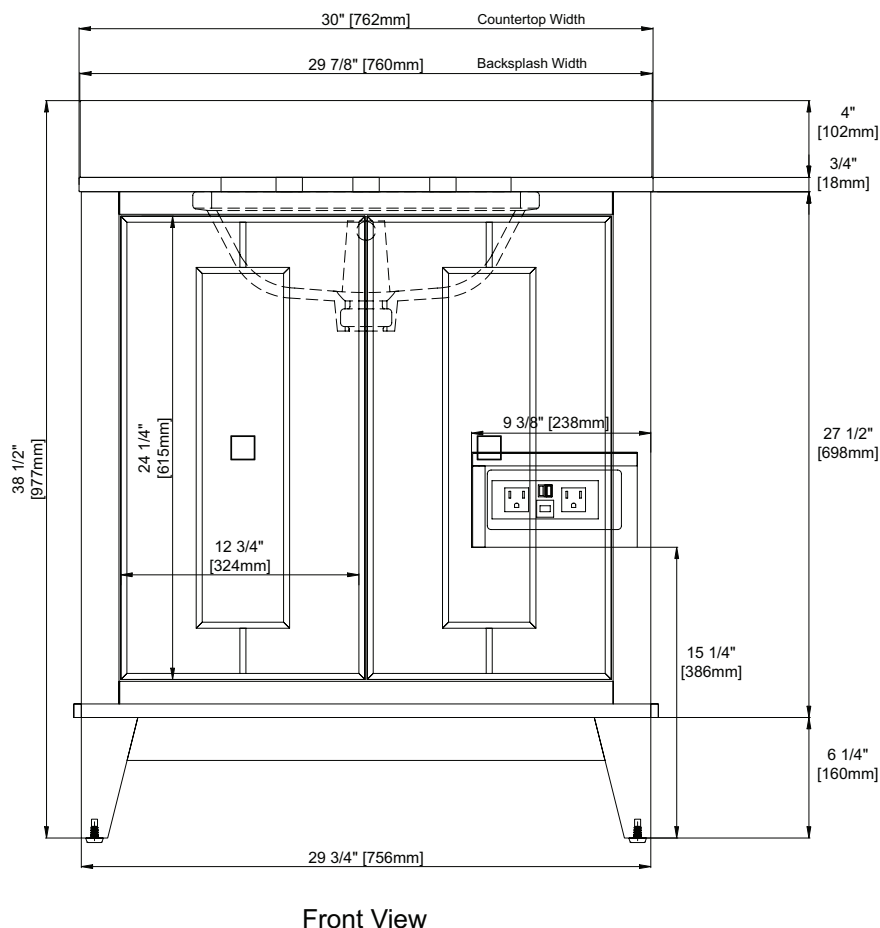
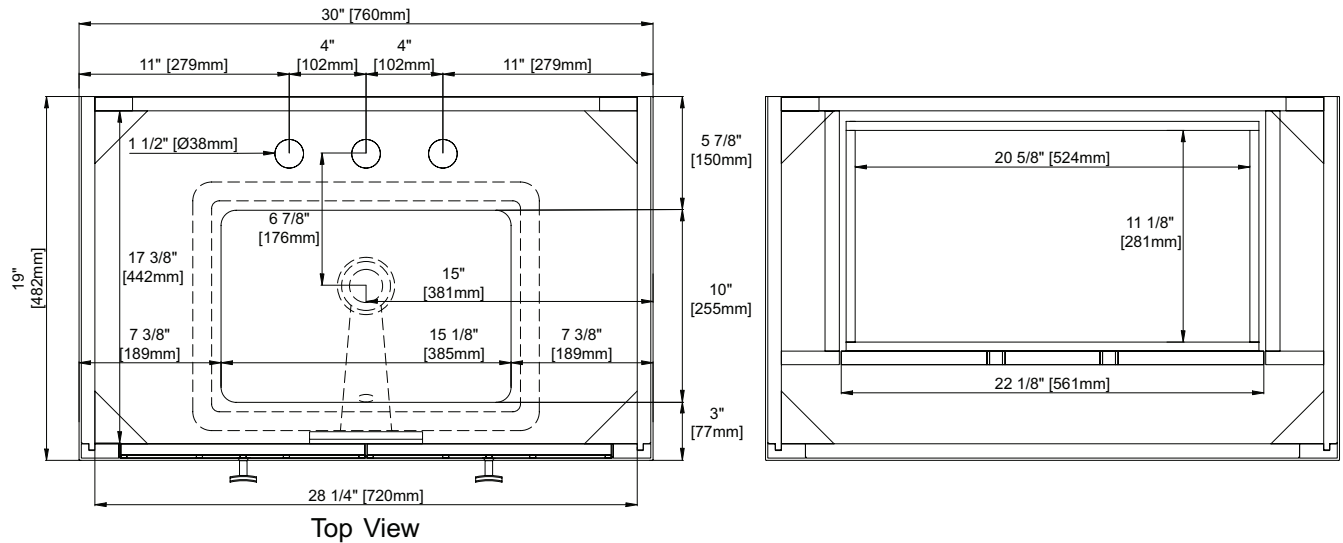
CUPC FILE NO: 14592

All dimensions are nominal

1/3

30" KINSALE VANITY

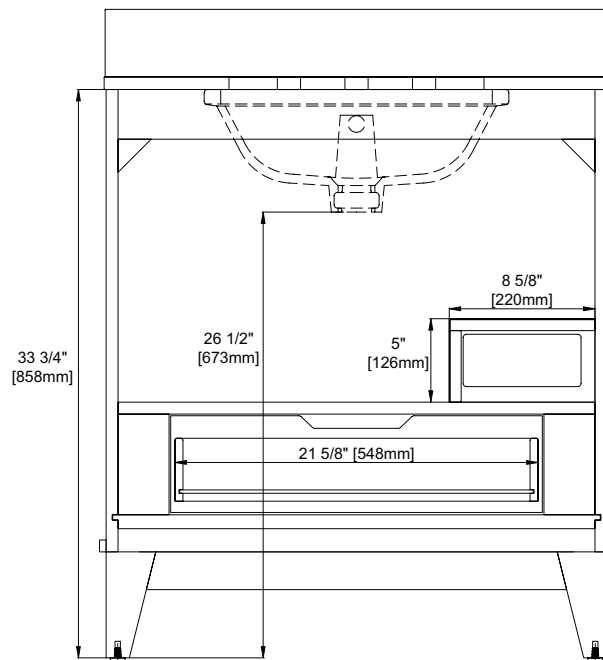
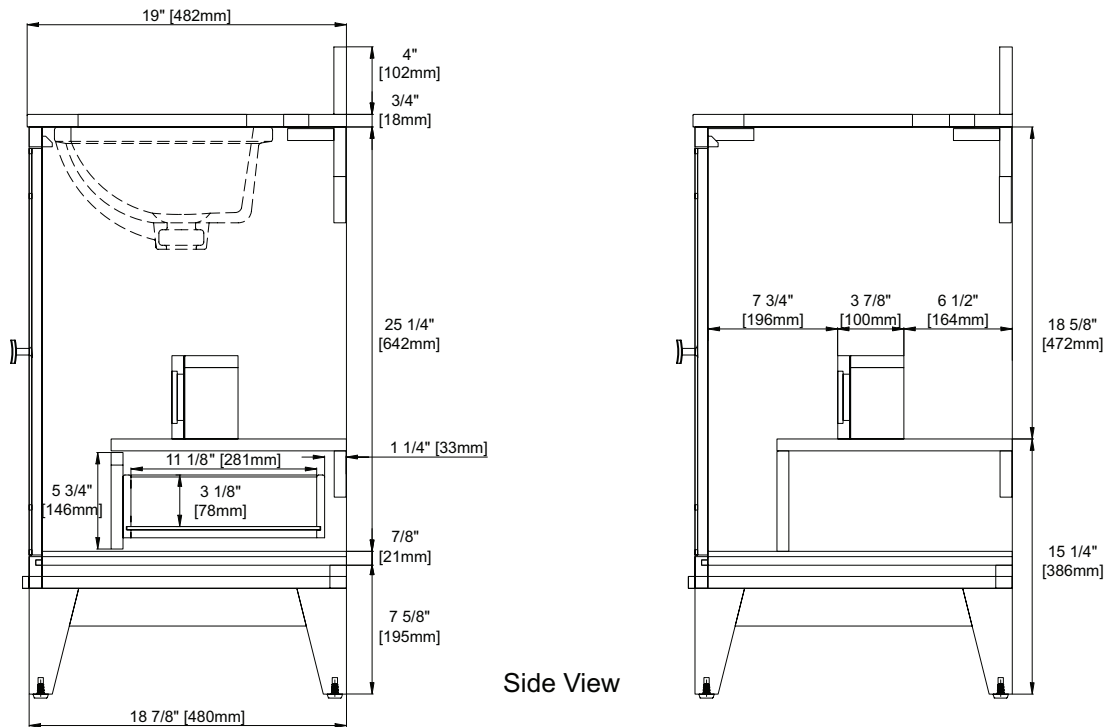
PRODUCT DIMENSIONS



All dimensions are nominal

30" KINSALE VANITY

PRODUCT DIMENSIONS



All dimensions are nominal

3/3